

Stanislas Verroust (1814-1863)

4me Solo de Concert, Op. 77 (1859)

pour le Hautbois avec Accompagnement de Piano ou de Quatour

Orchestration by Charles-David Lehrer
from the Richault Piano Score of 1859

Hautbois

1 *f* 2 *f* 3

9 *ff* *p* 3

16 *p* Cresc.

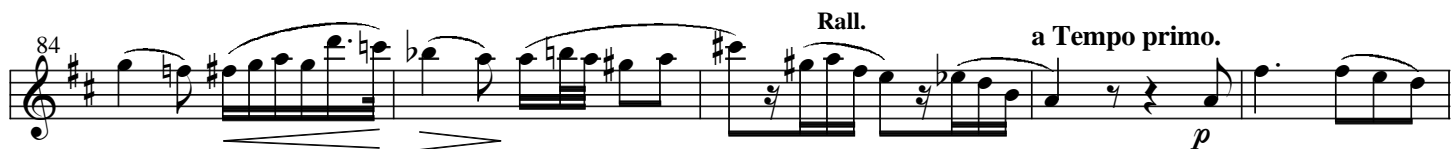
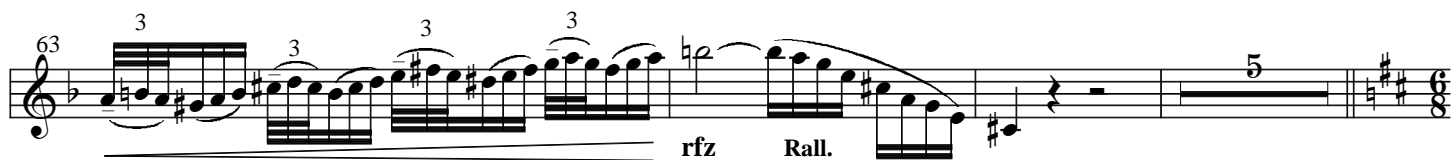
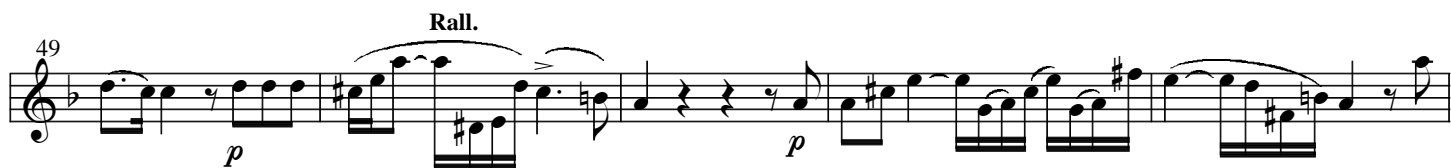
18 Solo *f* *p*

23 *f* *p*

28 *Dolce* 3 3

33 Cresc. *ff* *sfz* *p* 3 3

39 Rall.



93 *Meno mosso*

Staff 93-96: Treble clef, key of D major. Measures 93-96 contain complex sixteenth-note patterns with slurs and accents.

97

Staff 97-103: Treble clef, key of D major. Measures 97-103 continue the sixteenth-note patterns. Measure 103 ends with a double bar line and a key signature change to D minor (three flats). Measure 104 begins with a 3-measure rest.

104

Staff 104-110: Treble clef, key of D minor. Measures 104-110 include a 2-measure rest, a forte (*f*) dynamic marking, and sixteenth-note patterns.

111 *Solo* *p*

Staff 111-115: Treble clef, key of D minor. Measures 111-115 feature triplet markings (*3*) and a piano (*p*) dynamic marking.

116

Staff 116-120: Treble clef, key of D minor. Measures 116-120 continue with sixteenth-note patterns and slurs.

121 *rfz*

Staff 121-125: Treble clef, key of D minor. Measures 121-125 include a *rfz* (rassordito forzando) marking and sixteenth-note patterns.

126 *Rall.*

Staff 126-131: Treble clef, key of D minor. Measures 126-131 feature a *Rall.* (rallentando) marking and sixteenth-note patterns.

132 *a Tempo primo.*

Staff 132-136: Treble clef, key of D minor. Measures 132-136 include an *a Tempo primo.* marking and sixteenth-note patterns.

137 *Meno mosso* *rfz*

Staff 137-144: Treble clef, key of D minor. Measures 137-144 include a *Meno mosso* marking, a *rfz* marking, and a 3-measure rest.

145 *Dolce*

Staff 145-151: Treble clef, key of D minor. Measures 145-151 include a *Dolce* marking and sixteenth-note patterns.

152 *Rall.*

Staff 152-156: Treble clef, key of D minor. Measures 152-156 include a *Rall.* marking and sixteenth-note patterns.

158 **a Tempo primo.**



165 **Ritard.** **a Tempo primo.**



172



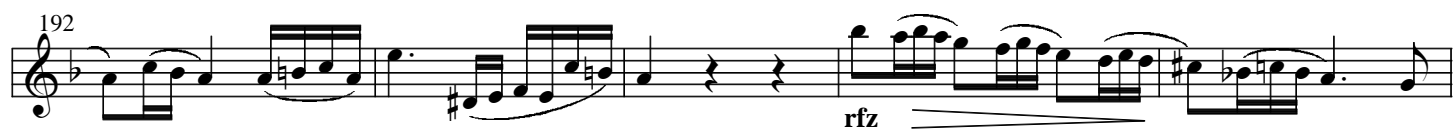
178 **a Tempo primo.**



187



192



197



202



207



212



217



221

sfz

224

sfz